



"It gave all the family peace of mind... I could not recommend Just Checking highly enough."

# 100%

of systems are built in the UK



10 years experience in social care

Our servers have more than **99.9%** reliability

100% of users rate our support as 'good' or better

**EASY SELF-INSTALL**

- No wiring
- No broadband
- No extra network charges

Used by **86%** of UK Local Authorities

the **easiest way to care** when you physically can't be there.

"It really is a lifeline to me and enables me to work a little at home, knowing Mum is safe."



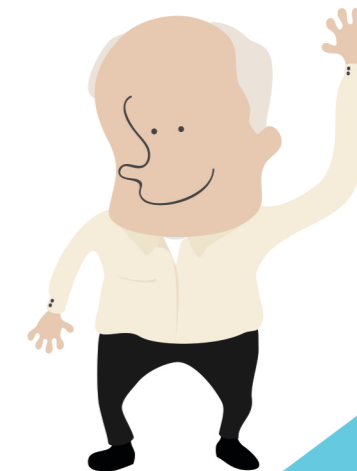
**Hello!**  
We're Just Checking

## What is it?

Just Checking is an easy-to-use online activity monitoring system that helps people who are becoming forgetful stay independent in their own home. The system is easy to install, simple to use, and creates a clear chart of daily living activity that you can view securely online. Discreet wireless motion and door sensors and a plug-in controller build up a picture of how your loved one is coping. You'll find it a big help to manage and share the caring.



"This system has been a life calmer! Excellent. I tell everyone about it!"



Pull out & down

# Just Checking

Just Checking could make the difference between your loved one going into care or continuing to live in their own home for as long as possible.

The surprising truth is that many people with memory problems, including those with Alzheimer's, can live in the familiarity of their own home quite easily. But of course, you need to know that for sure.

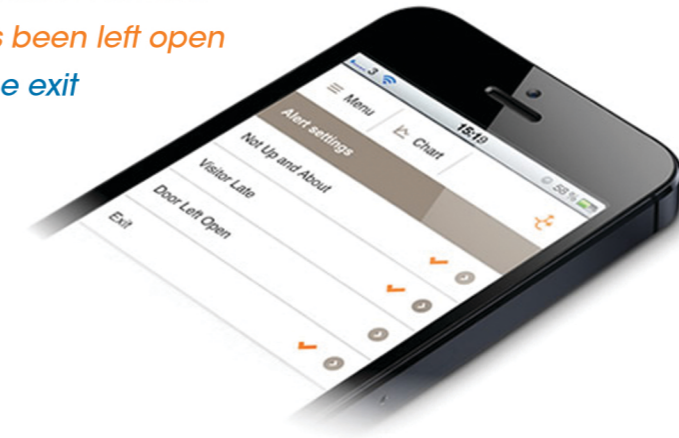
"Without Just Checking we would have gone down the route of residential care sooner.

The system helped us know what was happening in dad's home, and to support him at home for longer."



You'll be able to see if care arrangements are working well and you can set up text or email alerts for when things are not quite as expected.

*Not up and about in the morning*  
*A care visit hasn't arrived*  
*A door has been left open*  
*A night time exit*



## How does it work?

Just Checking includes 5 movement sensors, 2 door sensors and the controller, which uploads data via the mobile phone network to the web server. The controller is plugged into an electrical socket. You don't need a telephone line or broadband. The sensors are attached to paintwork such as doorframes, using Velcro.

**There is no wiring and it's really simple to install.**

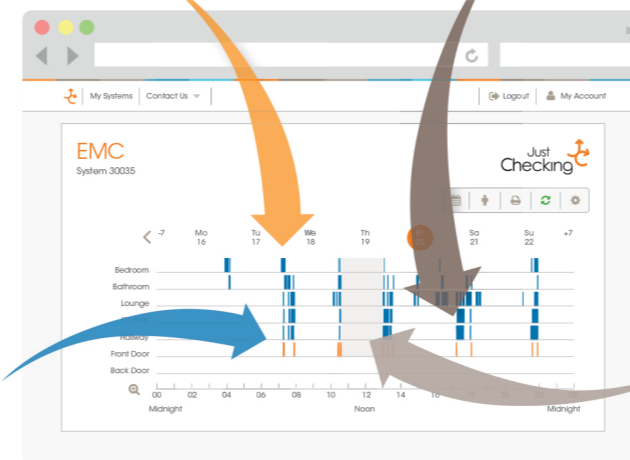
Small wireless sensors in the main rooms of the house generate a chart of activity as the person goes about their daily life.

Logging into the chart via the secure Just Checking website will show you when a person....

Hallway: *received expected visitors or care calls...*

Bedroom: *went to bed, got up and whether they had a disturbed night...*

Kitchen: *visited the kitchen to prepare meals...*



Front Door: *left the house and for how long...*

**No cameras?**  
**Then what can I see?**

Our chart tells you everything you need to know.



View the chart from anywhere. All you need is an internet connection!

- 5 discreet wireless sensors
- 2 door sensors
- 1 plug-in controller



**A lot in a small box**

"Quite tremendous. We thought it would be a matter of weeks before mum would have to move to residential care. But we were able to support mum at home for over 9 months!"



Just Checking 



For more information, and to hear from others who have used the system, visit [www.justchecking.co.uk](http://www.justchecking.co.uk)